

**RUSH
WITT &
WILSON**



**RUSH
WITT &
WILSON**
FOR SALE
01424 225388
rushwittwilson.co.uk

**2 Heighton Close, Bexhill-On-Sea, East Sussex TN39 3UP
£335,000**

A beautiful three bedroom semi-detached house, situated on a private driveway of four houses, adjacent to Ashcombe Park in a tranquil area of Cooden, offering bright and spacious accommodation throughout the property comprises large dual aspect living/dining room, modern fitted kitchen, downstairs wc, three bedrooms, modern shower room. Other internal benefits include gas central heating system and double glazed windows throughout. Externally, the property offers well maintained front and rear gardens, garage. Viewing comes highly recommended by RWW sole agents. Council Tax Band D.



Entrance Hallway

With stairs leading to first floor, double radiator, under stairs cupboard with hanging space and shelving, parquet flooring.

Kitchen

10'3" x 9'10" (3.13 x 3.00)

Modern fitted kitchen with a range of matching wall and base level units with laminate straight edge worktops surfaces, sink with drainer and mixer tap, integrated oven and grill, four ring gas hob, integrated microwave, space for dishwasher, space and plumbing for washing machine, space for freestanding fridge/freezer, double glazed windows overlooking the rear garden, obscured glass panelled window giving access onto side.

WC

suite comprising wc with low level flush, floating wash hand basin and mixer tap, radiator, obscured glass panelled window to the side elevation.

Living/Dining Room

17'5" x 16'9" (5.32 x 5.12)

Dual aspect with windows at both the front and rear elevation, two radiators, parquet flooring

First Floor Landing

Access to roof space via loft hatch, radiator, double glazed window to the front southerly aspect, airing cupboard with hot water cylinder and slatted shelving.

Bedroom One

13'7" x 10'7" (4.15 x 3.24)

Double glazed windows to the rear elevation, built in wardrobe cupboards with mirrored sliding doors, radiator.

Bedroom Three

7'7" x 7'2" (2.32 x 2.20)

Double glazed windows to the southerly aspect with distant sea views, radiator.

Bedroom Two

11'10" x 9'10" (3.63 x 3.00)

Double glazed windows to the rear elevation, radiator, built in wardrobe cupboards with mirrored sliding doors.

Shower Room

Modern suite comprising wc with low level flush, vanity unit with wash hand basin and mixer tap, walk in shower with

chrome wall mounted shower controls, shower attachment and showerhead, chrome heated towel rail, tiled walls, tiled floor, obscured glass panelled window to the front elevation.

Outside

Front Garden

The property is approached by beautifully established front gardens with small trees, plants and shrubs of various kinds.

Rear Garden

Mainly laid to lawn with patio areas, suitable for alfresco dining, timber framed shed, flowerbeds, fenced and enclosed, side access is available.

Garage En-Bloc

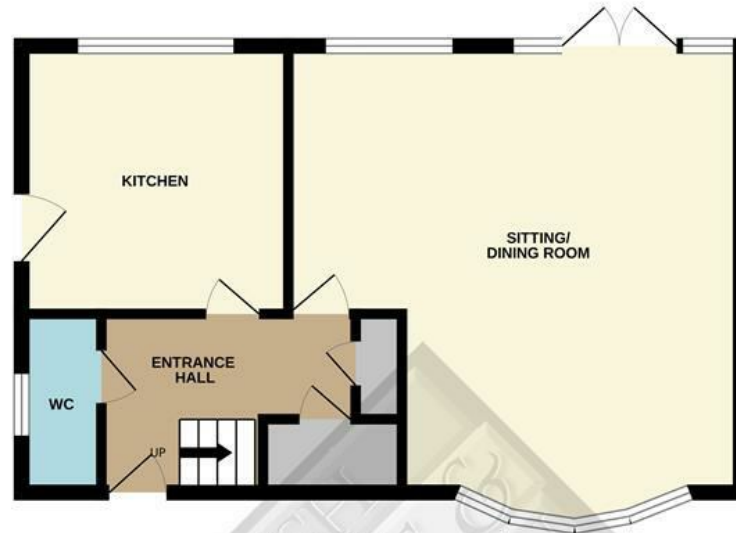
With up and over door.

Agents Note

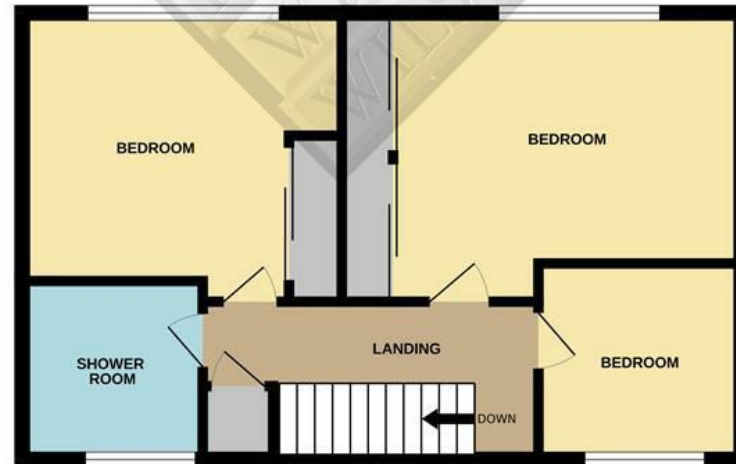
None of the services or appliances mentioned in these sale particulars have been tested. It should also be noted that measurements quoted are given for guidance only and are approximate and should not be relied upon for any other purpose.



GROUND FLOOR
453 sq.ft. (42.1 sq.m.) approx.



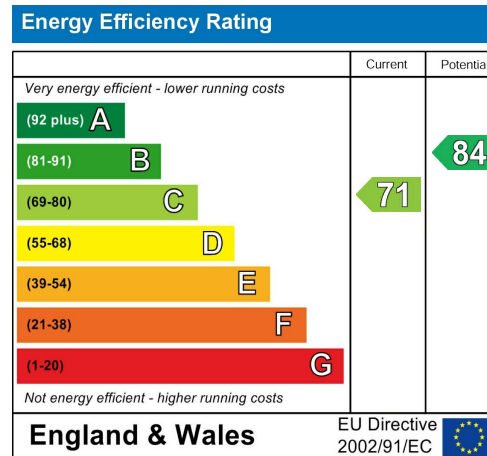
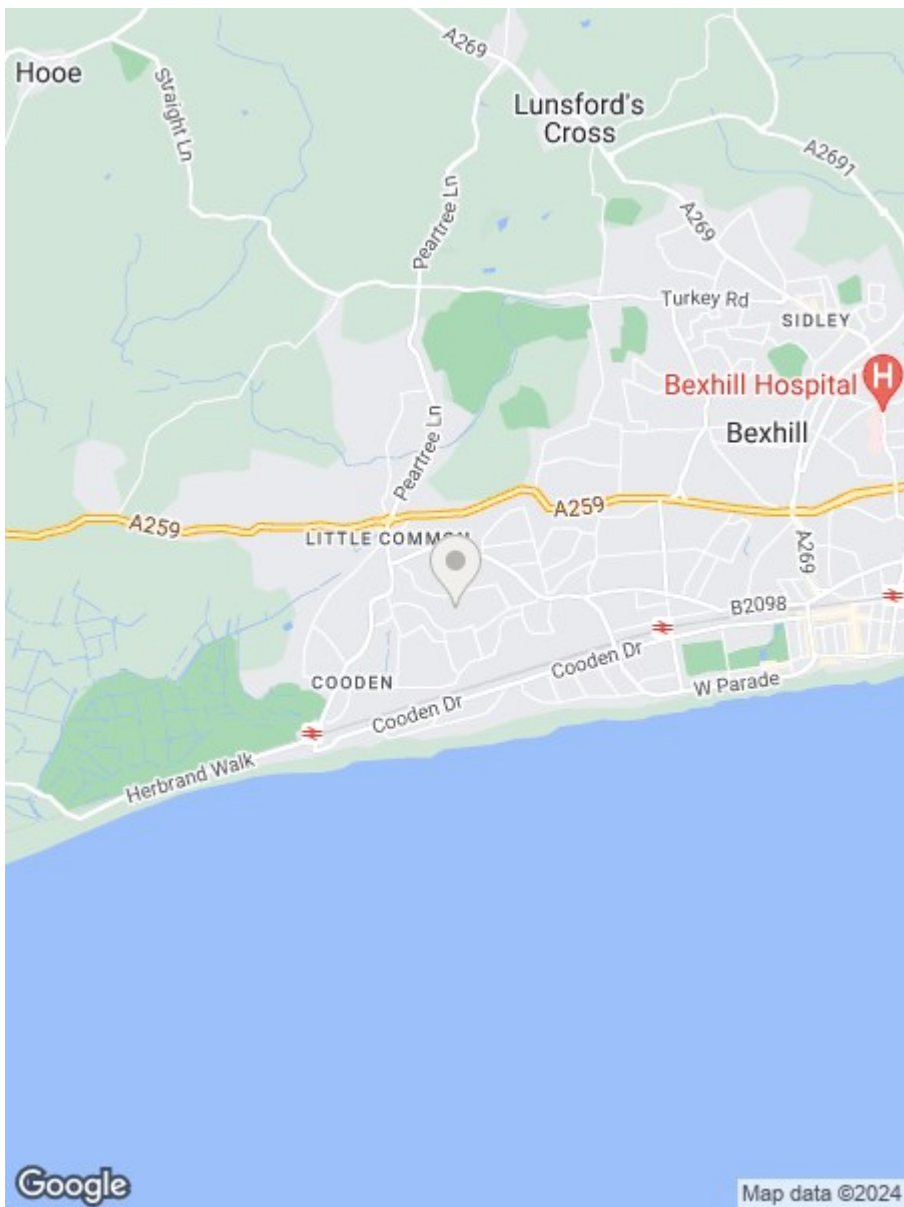
1ST FLOOR
446 sq.ft. (41.5 sq.m.) approx.



TOTAL FLOOR AREA : 900 sq.ft. (83.6 sq.m.) approx.

Whilst every attempt has been made to ensure the accuracy of the floorplan contained here, measurements of doors, windows, rooms and any other items are approximate and no responsibility is taken for any error, omission or mis-statement. This plan is for illustrative purposes only and should be used as such by any prospective purchaser. The services, systems and appliances shown have not been tested and no guarantee as to their operability or efficiency can be given.

Made with Metropix ©2024



**RUSH
WITT &
WILSON**

**Residential Estate Agents
Lettings & Property Management**



**3 Devonshire Road
Bexhill-on-Sea
East Sussex
TN40 1AH
Tel: 01424 225588
bexhill@rushwittwilson.co.uk
www.rushwittwilson.co.uk**